

# Woodland Creek



## Wood Overlay Doors

## CARRIAGE HOUSE PANELS



↑ MODEL E

### Wood Overlay Doors

Woodland Creek offers the beauty of real wood overlaid on the strength of steel to enhance the beauty of your home.

- Overlay 3 layer insulated sandwich panel
- Cedar overlay finish
- 5 style designs
- R-value 10.25
- Steel interior skin

*\*All doors are shipped unfinished tight knot cedar.*



MODEL A



MODEL B



MODEL C



MODEL D



MODEL E



# Woodland Creek

## Wood Overlay Doors

### CARRIAGE HOUSE PANELS

#### FEATURES

5

##### AVAILABLE IN FIVE DESIGNS

With a complete line of window design options and may be custom ordered from any architectural drawing.

3

##### OVERLAY 3 LAYER INSULATED SANDWICH PANEL

Nominal 24 gauge steel exterior panel and a 26 gauge pebble grain embossed steel interior panel with polystyrene insulation.



##### CEDAR OVERLAY FINISH

Attached chemically to the surface creating a lasting superior bond.



##### 20 GAUGE HOT DIPPED STEEL HINGE PLATES

Galvanized steel hinge plates run the full height of each section at all hinge locations to facilitate the attachment of hinges, handles, struts, and step plates.



##### RIGID ALUMINUM RETAINER WITH WEATHERSTRIP

Provides added strength while securing replaceable U-type bottom astragal weatherstrip to help keep the elements out.



##### TONGUE AND GROOVE MEETING RAILS

For superior strength and better sealing against wind, rain, and snow.



##### R-VALUE 10.25

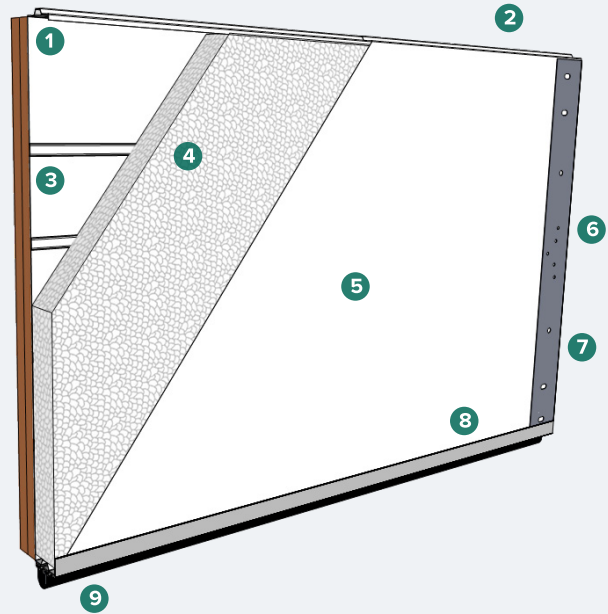
Sandwich type construction with polystyrene insulation pressure bonded between two sheets of hot dipped galvanized steel enhances your home's energy savings, makes your door operation quieter, and reduces exterior noise in your garage.



##### CFC FREE EXPANDED POLYSTYRENE

Environmentally friendly insulation that will not degrade with vibration or time.

#### CONSTRUCTION



- 1 Tongue and groove meeting rails
- 2 3 1/2" thick overlay section
- 3 Rough cedar tongue and groove overlay
- 4 Full thickness CFC free expanded polystyrene insulation pressure-bonded to exterior and interior skins
- 5 26 gauge pebble grain embossed interior skin
- 6 20 gauge vertical interior hinge plates for hardware attachment; plates extend full height of section
- 7 20 gauge galvanized steel end cap
- 8 Extruded aluminum weatherstrip retainer
- 9 Replaceable U-type vinyl bottom weatherstrip

#### HARDWARE OPTIONS



CAST IRON

STAMPED STEEL



MODEL E ↑



5700 NW 39th St, Riverside, MO 64150  
816-474-3900 / sales@doorlinkmfg.com  
© doorLink Manufacturing, Inc.



See what this door looks like on your own home at [doorLinkmfg.com](http://doorLinkmfg.com)